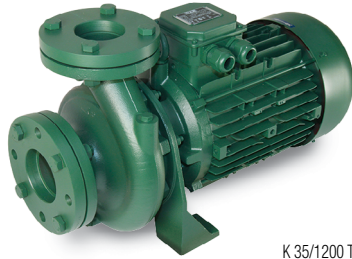


K

SINGLE IMPELLER CENTRIFUGAL PUMPS



K 35/1200 T

Single impeller centrifugal pump suitable for domestic, civil, industrial and agricultural installations and for decanting, mixing and irrigating uses. Cast iron pump body and motor support. Technopolymer impeller. Stainless steel driving shaft. Carbon/ceramic mechanical seal. Asynchronous, closed motor, cooled by external ventilation. Built-in thermal and current overload protection and a capacitor permanently on in the single-phase version. For the protection of the three-phase motor it is advisable to use a suitable overload protection complying with the regulations in force.

Operating range from 7.9 to 422.7 gpm (1.8 to 96 m³/h) with head up to 203 ft (62 m)

Pumped liquid characteristics clean, free from solids or abrasive substances, non-viscous, non-aggressive, non-crystallised, chemically neutral and close to the characteristics of water

Liquid temperature range from 14°F to +122°F (-10°C to +50°C)

Maximum operating range 87 psi

Maximum ambient temperature +104 F (+40°C)

Protection level IP 44

Terminal board protection level IP 55

Insulation class F



TECHNICAL DATA

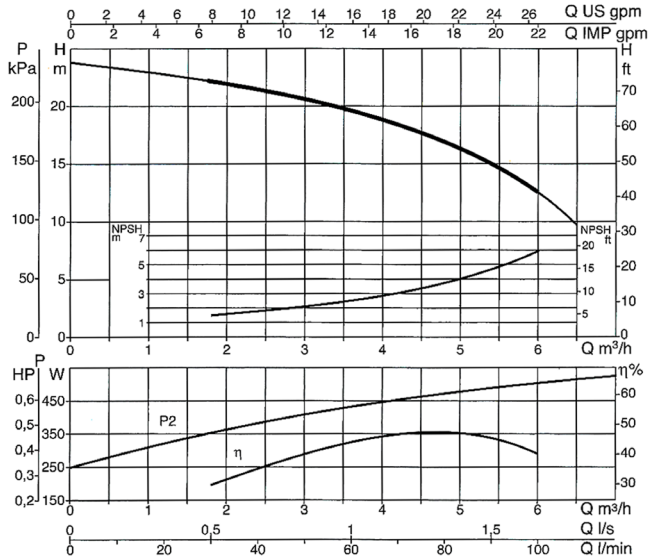
MODEL	CODE	ELECTRICAL DATA						
		VOLTAGE 60 Hz	P1 MAX kW	P2 NOMINAL		In A	CAPACITOR	
				kW	HP		µF	Vc
K 20/41 M	60113967	1x115/230 V~	0.8	0.37	0.5	6.7-3.5	40	250
K 30/70 M	60113968	1x115/230 V~	1.5	0.75	1	14.5-7.35	80	450
K 30/100 M	102115640	1x220-230 V~	1.72	1.1	1.5	8-7.6	31.5	450
K 36/100 M	102115700	1x220-230 V~	2.1	1.85	2.5	9.4-9	40	450

K

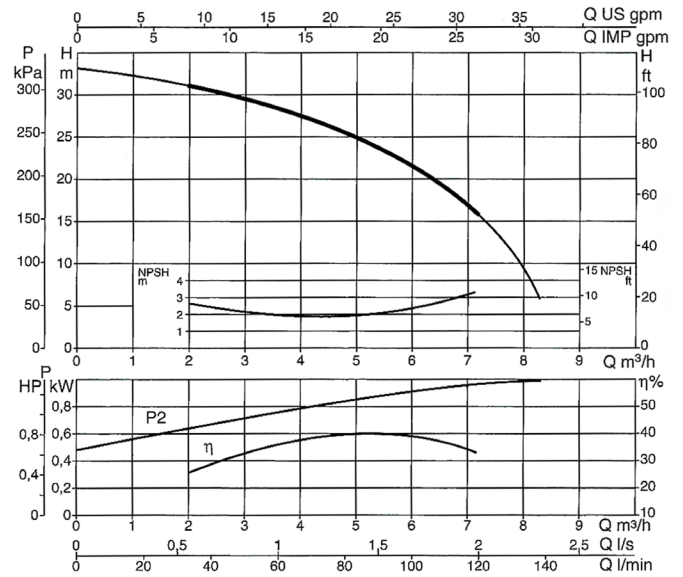
SINGLE IMPELLER CENTRIFUGAL PUMPS

RANGE PERFORMANCE

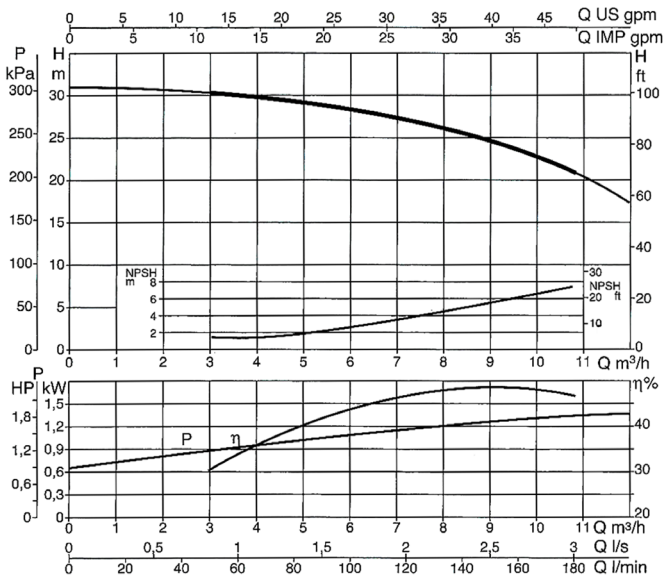
K 20/41



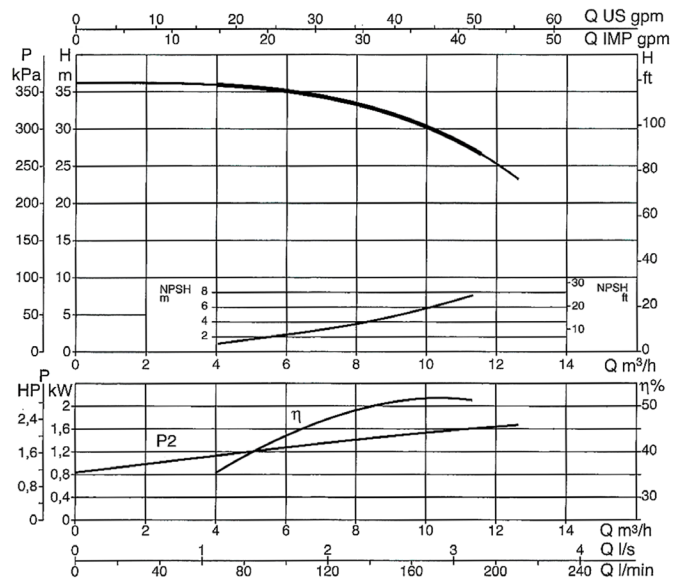
K 30/70



K 30/100



K 36/100



MODEL	P2 NOMINAL		Q = gpm	0	7.9	10.6	15.8	21.1	26.4	31.7	39.6	42.2	46.2	52.8	
	kW	HP	Q = l/min	0	30	40	60	80	100	120	150	160	180	200	
K 20/41 M *	0.37	0.5	H (ft)	77	71	69	62	53	40	15					
			H (m)	23.4	21.5	21.0	19.0	16.3	12.2	4.5					
K 30/70 M	1.5	0.75	H (ft)	108	102	100	94	87	75	62					
			H (m)	33	31.1	30.5	28.8	26.5	23.0	19.0					
K 30/100 M	1.1	1.5	H (ft)	100		98	95	93	90	86	74	70	59	37	
			H (m)	30.5		29.9	29.0	28.4	27.5	26.2	22.5	21.2	18.0	11.2	
K 36/100 M	1.85	2.5	H (ft)	117		116	115	114	111	106	98	94	85	70	
			H (m)	35.6		35.4	35.0	34.6	33.8	32.4	30.0	28.8	26.0	21.3	

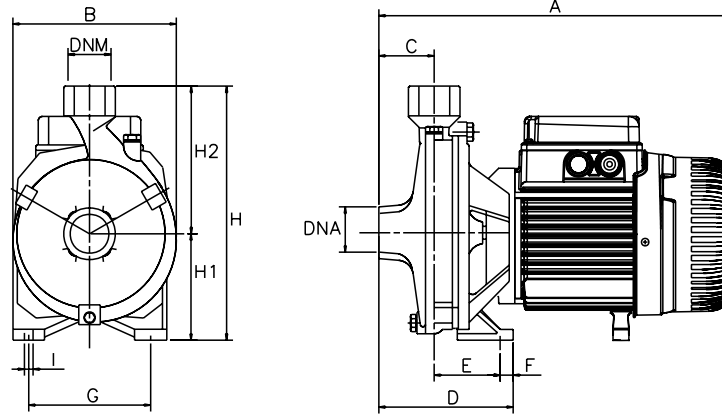
* pump not suitable for domestic application

K

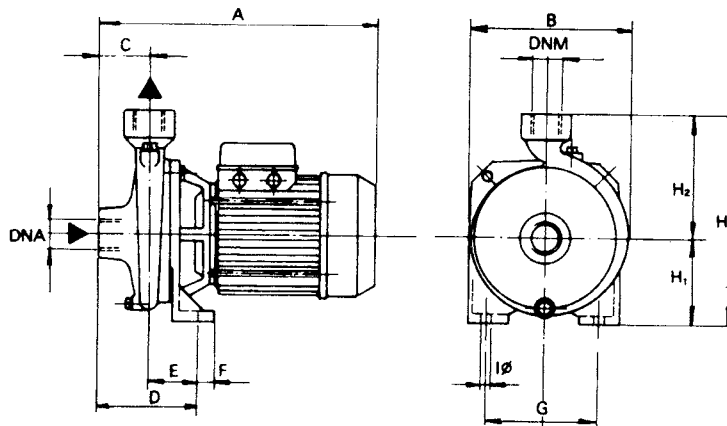
SINGLE IMPELLER CENTRIFUGAL PUMPS

DIMENSIONS AND WEIGHTS

K 20/41 - 30/70



K 30/100 - 36/100



MODEL	units	A	B	C	D	E	F	G	I Ø	H	H1	H2	DNA	DNM	PACKAGING DIMENSIONS			VOLUME	WEIGHT	Q.TY x PALLET
															L/A	L/B	H			
K 20/41 M	inches	11.8	6.3	2	3.9	2	0.6	4.3	0.4	8.1	3.3	4.7	1"	1"	13.1	8	10.1	0.8 ft³	22.3 lbs	39
	mm	300	160	50	100	50	15	110	9	205	85	120			332	202	257	0.024 m³	10.1 kg	
K 30/70 M	inches	11.8	7.3	2	4.3	2.3	0.6	5.5	0.4	9.3	3.9	5.3	1"	1"	9.1	9.1	10.3	0.8 ft³	32.6 lbs	30
	mm	300	185	50	108	58	15	140	9	235	100	135			232	232	262	0.024 m³	14.8 kg	
K 30/100 M	inches	13.1	7.9	2	4.5	2.5	0.6	5.5	0.4	10	4.1	5.9	1 1/2"	1"	16.8	9.7	12.1	1.1 ft³	40.8 lbs	21
	mm	333	200	50	114	64	15	140	9	255	105	150			427	246	307	0.032 m³	18.5 kg	
K 36/100 M	inches	13.1	7.9	2	4.5	2.5	0.6	5.5	0.4	10	4.1	5.9	1 1/2"	1"	16.8	9.7	12.1	1.1 ft³	43.4 lbs	21
	mm	333	200	50	114	64	15	140	9	255	105	150			427	246	307	0.032 m³	19.7 kg	